

A man in a blue blazer and dark trousers sits on a small wooden stool in front of a massive, towering pile of discarded household items and debris. The pile includes a red sofa, a white mattress, a large white bag, and various pieces of wood, plastic, and metal. The background shows a clear blue sky with some clouds. The overall scene conveys a message about waste management and recycling.

**Sysav**

Rustan Nilsson  
Environmental Educator

**SYSAV**

A man in a blue blazer and dark trousers sits on a small wooden stool in front of a massive, towering pile of discarded household items and debris. The pile includes a red sofa, a white mattress, a large white bag, and various pieces of wood, plastic, and fabric. The background shows a clear blue sky with some clouds. The overall scene conveys a message about waste management and recycling.

**Sysav**

Rustan Nilsson  
Environmental Educator

**SYSAV**

A man in a blue blazer and dark trousers sits on a small wooden stool in front of a massive, towering pile of discarded household items and debris. The pile includes a red sofa, a white mattress, a large white bag, and various pieces of wood, plastic, and fabric. The background shows a clear blue sky with some clouds. The overall scene conveys a message about waste management and recycling.

**Sysav**

Rustan Nilsson  
Environmental Educator

**SYSAV**



Environmental education  
refers to organized efforts to teach  
how natural environments function,  
and particularly, how human beings can  
manage behavior and ecosystems to  
live sustainably





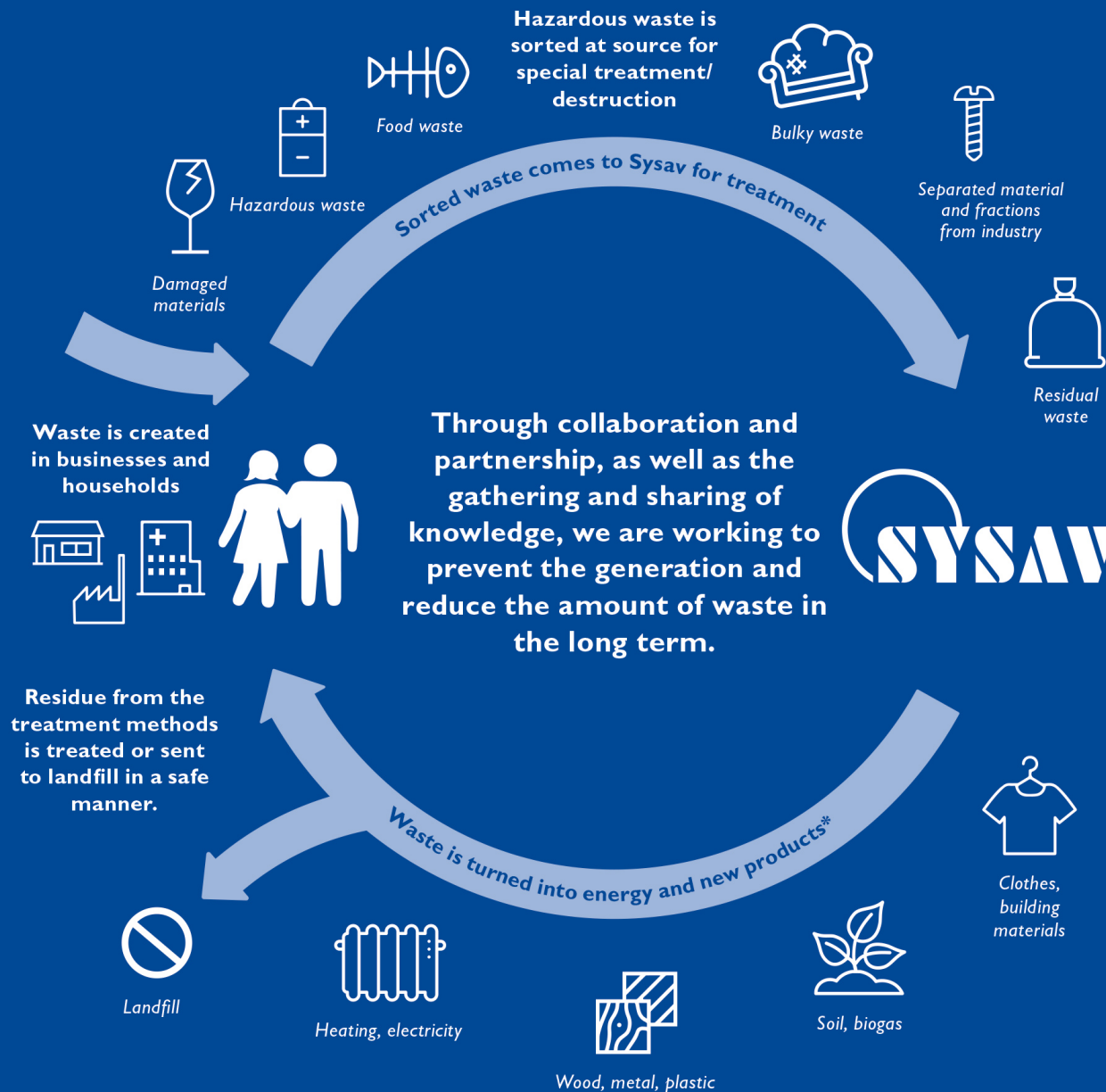


# Sysav

Founded in 1974  
Owned by 14 municipalities  
Serving ~750.000 inhabitants plus commercial & industrial customers  
~1 Mton waste received annually  
Turnover ~ 90 M€  
~ 300 employees  
15 recycling centres  
Facility for Hazardous Waste  
Two active Landfills  
Five sorting and recycling facilities



Avfallsanläggning Återvinningscentral



\*According to the EU's waste hierarchy

# Vision

Sysav contributes to creating the world's most sustainable region, for the present and future generations alike

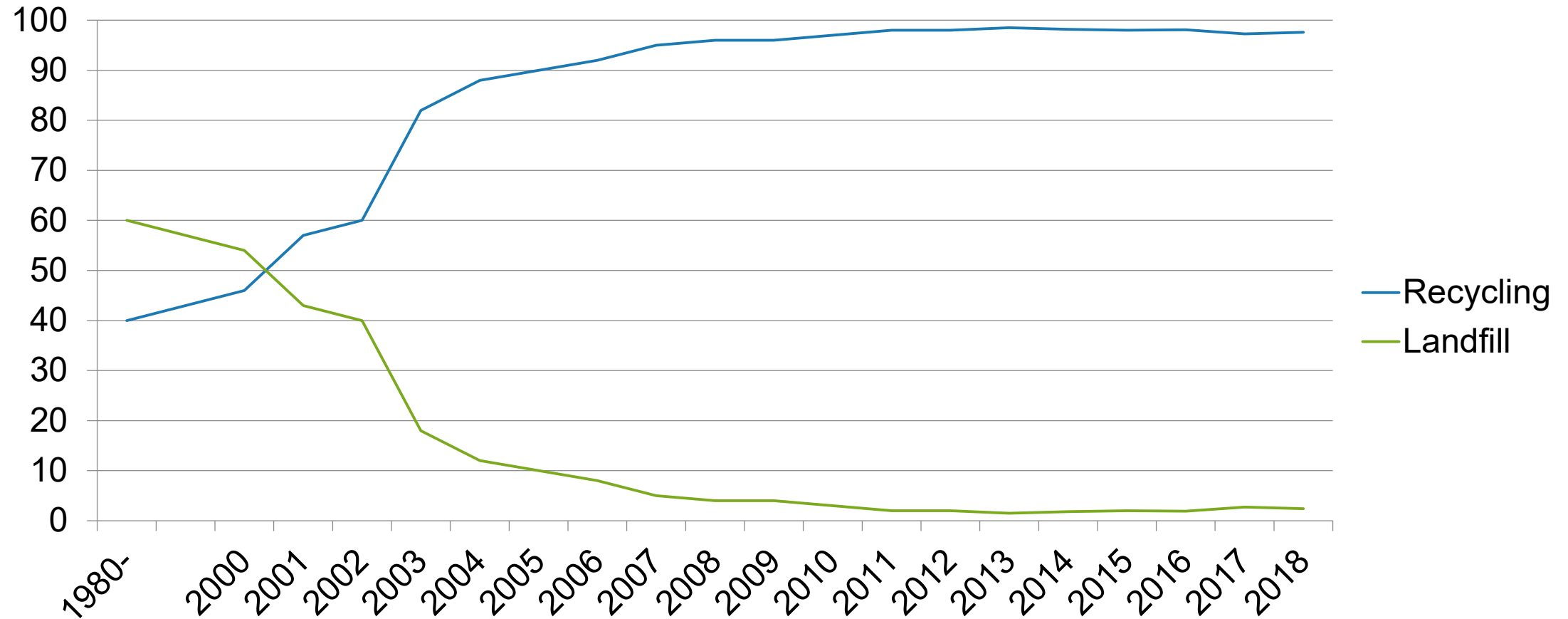


## Goal since 1974:

- Maximum recycling of materials and energy
- Minimum of landfilling



# Recycling versus landfill







Reusable  
bag

RE  
FILL

REDUCE

FREE MARKET

REUSE

RECYCLING

ENERGY RECOVERY

LANDFILL

DISPOSAL







# What about the plastics, then?



# Energy-from-Waste Plant

Production of district heating and  
electricity from combustible waste



# Capacity

- Two hot-water boilers from 1973 that generate district heating
- Two steam boilers from 2003 and 2008 that generate district heating and electricity
- The fuel consists of combustible waste from households and enterprises
- 576 500 tonnes of waste were combusted in 2017
- Permit to combust 630 000 tonnes per year





# Energy Recovery

- 1,5 TWh district heating
- 266 GWh electricity
- Sysav provides 60 percent of the district heating needed in Malmö and Burlöv

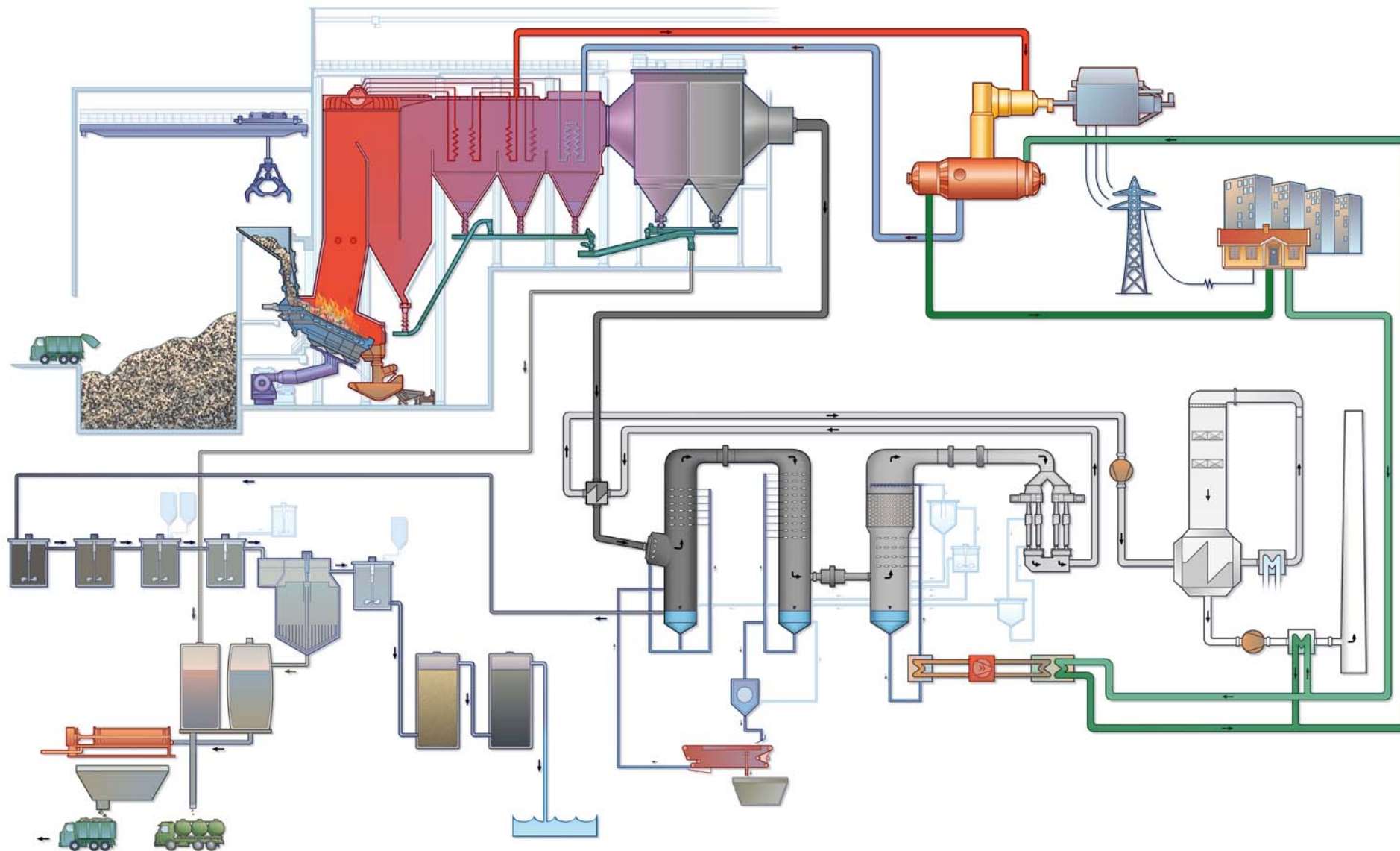


# 1 000 ° C

- The furnaces have a temperature of 1 000 ° C
- The hot flue gases turn the water in the boilers into steam
- The steam is used to produce district heating and electricity







# Why?



36%

- Bad sorting at source
- Outdated presumptions
- Lack of interest
- "The furnace needs it"
- Mistrust
- Toxicity
- We are good enough
- Not our problem
- Design

...and so on





# Time to step up, right?

## Sysav will:

- Listen
- Adapt
- Collaborate

And it has already begun....



# Sustainable waste management

- Contribute to reducing the environmental impact of the society
- Be cost-efficient
- Be accepted by the public and other stakeholders





# Swedes

- Trust in democracy
- Trust in institutions
- Trust in politicians
- Trust in the economy
- Trust in other people
- Trust in media



Are we naive?



# Trust is built by

- Competens
  - Quality
  - Integrity
  - Transparency
  - Empathy
  - Values
- But also by external factors

Trust is a key factor



Either we behave...

...or someone else will make us

## Goal since 1974:

- Maximum recycling of materia and energy
- Minimum of landfilling



# One home one family

Thank you!  
[rustan.nilsson@sysav.se](mailto:rustan.nilsson@sysav.se)





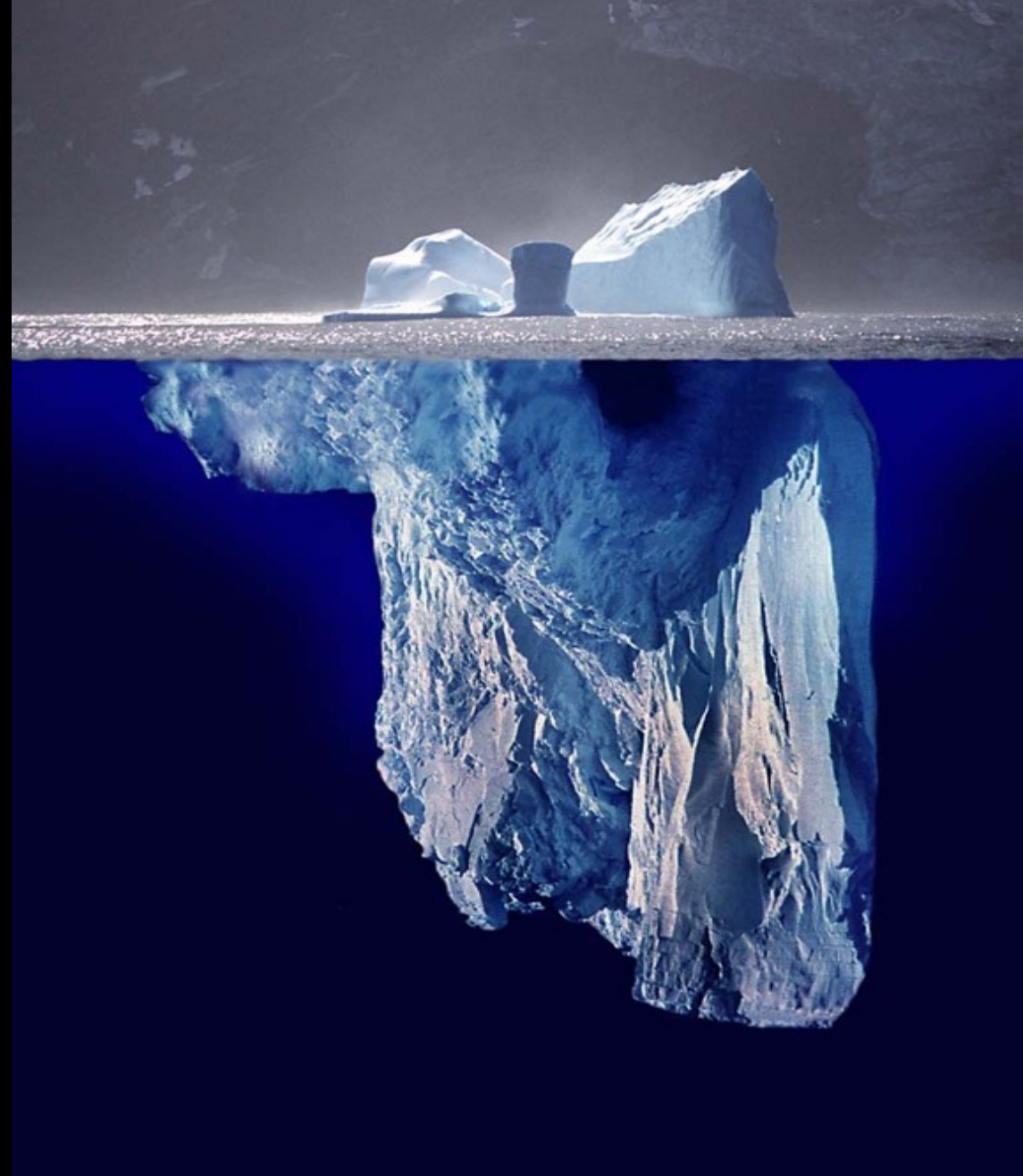
How  
much?





500 kg

The tip of the iceberg



# 2050

10 billion people

The world economy 3-4 times larger





# Save the climate by kitesurfing...



...instead of jetskiing!





